

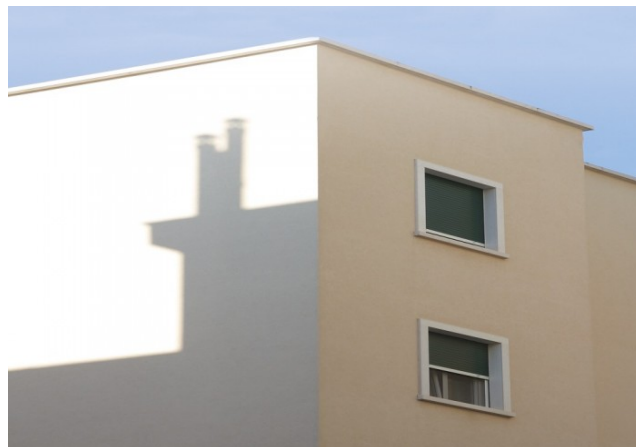
## ACRISOL - IMPRIMITURA ACRILICA



Water - dilutable acrylic insulating product

Filler for wall substrates

For external and internal painting cycles



### Code

0603

### Description

Water - based filler made of acrylic resins in water solution with a high degree of saponification.

### Use

This product is used as a support for anchoring next layers of paint on new or old plasters, on concrete, plaster and plasterboard surfaces. It is also suitable for many kinds of building materials, provided they are absorbent, on old compact and well adherent paints.

### Appearance of the film

Translucent

### Color

Transparent

### Component

1

### Hardening

Physical hardening through evaporation and union of the polymer

|                            |   |
|----------------------------|---|
| Specific weight            | 1,01 gr/ml  |
| Volume of solids           | 26 %  |
| VOC                        | 5 gr/ liter   |
| Minimum thickness          | 5 – 10 micron   |
| Estimated yield            | 26 m <sup>2</sup> / litre for a thickness of 10 microns   |
| Preparation of surfaces    | <p>Make sure that the substrate is well dry; with a brush, remove any efflorescence, all parts of old paints that are peeling off. Completely remove high layers of lime or tempera paints.</p> <p>Level any irregularities, close the holes, sand.</p> |
| Preparation of the product | <p>Component A            100</p> <p>Dilute with water depending on the absorption of the substrate; however, perform the following ratio: 1 litre of « IMPRIMITURA ACRILICA » with 4 - 5 litres of water.</p>  |
| Environmental conditions   | <p>Ambient temperature:        from + 5 to 40° C</p> <p>Temperature of the support: &gt; 5° C</p> <p>Humidity:                        0 - 75 %</p> <p>Avoid applications in the presence of surface condensation or under direct sunlight.</p>          |
| Drying and hardening times | <p>At 25° C and 65 % UR</p> <p>Dry to touch 35 - 45 minutes</p>   |
| Overpainting               | 4 – 5 hours   |

**Application**

Brush, roller

If you use the brush, you have to use nylon or natural bristle brushes.

If you use the roller, you have to use medium - haired rollers.

For the application, it is necessary to use the method of crossing coats.

**Shelf life**

2 years in a cool and dry place (max 40° C)

**Packs**

Comp A Lt. 20 Lt. 5 Lt. 1

