

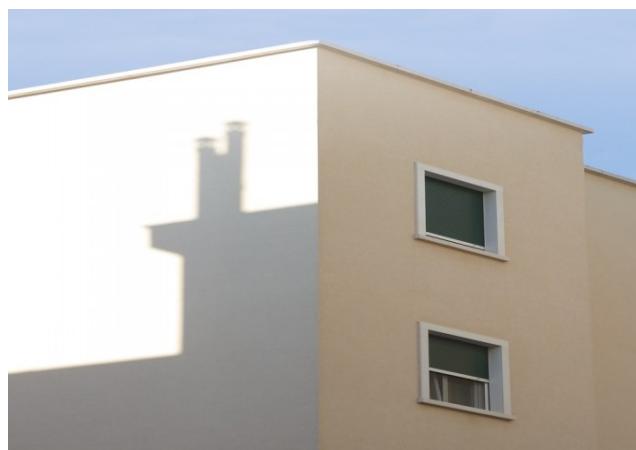
## ISOLCALCE



Water - dilutable acrylic insulating product

Filler for wall substrates

For lime - based paint cycles



### Code

0616

### Description

Water - based filler made of acrylic resins in water solution with a high degree of saponification.

### Use

This product is used as a support for anchoring next layers of paint on new or old plasters, on concrete, plaster and plasterboard surfaces. It is also suitable for many kinds of building materials, provided they are absorbent, on old compact and well adherent paints.

### Appearance of the film

Translucent

### Color

Transparent

### Component

1

### Hardening

Physical hardening through evaporation and union of the polymer

Specific weight	1,01 gr/ml
Volume of solids	26 %
VOC	5 gr/ liter
Minimum thickness	5 – 10 micron
Estimated yield	26 m <sup>2</sup> / litre for a thickness of 10 microns
Preparation of surfaces	<p>Make sure that the substrate is well dry; with a brush, remove any efflorescence, all parts of old paints that are peeling off. Completely remove high layers of lime or tempera paints.</p> <p>Level any irregularities, close the holes, sand.</p>
Preparation of the product	<p>Component A      100</p> <p>Dilute with water depending on the absorption of the substrate, however not less than 80 %.</p>
Environmental conditions	<p>Ambient temperature: from + 5 to 40° C</p> <p>Temperature of the support: &gt; 5° C</p> <p>Humidity:              0 - 75 %</p> <p>Avoid applications in the presence of surface condensation or under direct sunlight.</p>
Drying and hardening time	<p>At 25° C and 65 % UR</p> <p>Dry to touch 35 - 45 minutes</p>

Overpainting

4 – 5 hours

**Application**

Brush, roller

If you use the brush, you have to use nylon or natural bristle brushes.

If you use the roller, you have to use medium - haired rollers.

For the application, it is necessary to use the method of crossing coats

**Shelf life**

2 years in a cool and dry place (max 40° C)

**Packs**

Comp A Lt. 20 Lt. 5 Lt. 1

